

Designed for every day.



- 1 Directional microphones**
 Help improve speech understanding in noisy listening situations by focusing on the person talking in front of you while reducing sounds from other directions.
- 2 Hearing aid controls**
 Depending on the model, BTE or ITE, Sirion 2 comes with a push button and/or a rocker switch, so you can conveniently and discreetly change your hearing aid programs and volume.
- 3 IP67-rated**
 Resistant to moisture, sweat, and dirt, Sirion 2 keeps up with you even when you're exercising or gardening.
- 4 Telecoil**
 Transmits sounds directly into your hearing aids when you are in facilities equipped with an induction loop, such as places of worship, theaters or public buildings. It also comes in handy when using landline phones equipped with an induction coil.
- 5 Flexible battery compartment**
 The standard battery compartment of Sirion 2 M, P and SP models can be exchanged for a battery door with a connection for direct audio input via an optional audio shoe. This enables connection to FM systems, which is especially helpful in noisy environments, such as classrooms.
- 6 Vent**
 Ensures ventilation to the ear and enhances wearing and listening comfort.

Sirion 2: Sound at your discretion.

Did you know that there are hearing instruments so discreet that others don't even realize you're wearing them – even when you're making adjustments? Then take a close look at Sirion 2.

From mild to severe hearing losses, the members of the Sirion 2 family can offer exactly the level of amplification you need. Available in a range of models that hide behind your ear or in your ear, Sirion 2 can be customized by your Hearing Care Professional to fit your personal sound preferences.

Plus, you can discreetly control your Sirion 2 hearing aids via your smartphone. Simply download the free touchControl App™ and no one will know whether you're checking your messages or making a hearing aid adjustment.

So go on and discover the options Sirion 2 has in store for you.



BTE
Behind-the-ear models

ITE
In-the-ear models

touchControl App

The information in this document contains general descriptions of the technical options available, which do not always have to be present in individual cases and are subject to change without prior notice.

Android and Google Play are trademarks of Google Inc.
Apple App Store is a trademark of Apple Inc.

Legal Manufacturer
Sivantos GmbH
Henri-Dunant-Strasse 100
91058 Erlangen
Germany

Sivantos GmbH is a Trademark Licensee of Siemens AG.

Local Contact Information
House number and street name
City and postal code
Country
Phone: +XX-XXX-XXX-XXXX
www.XXXXXXXXXXXXXXXXXXX

Order No. 02941-99-C1-7600 | Printed in Germany
© 07.2016 Siemens AG

www.bestsound-technology.com



www.bestsound-technology.com/sirion2

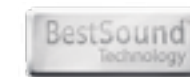
Enjoy the sound of life.

The Sirion 2 family.
Discreet hearing in every situation.



Trustworthy companions:
The Sirion 2 family.

Lean back and appreciate the joy of hearing – with the relaxed, reliable and discreet listening experience the new Sirion™ 2 offers you.



Life sounds brilliant.

Sirion 2:



Reliable partners, day in and day out.

No matter which Sirion 2 model suits you best, they all are packed with proven features that provide you with a comfortable listening experience and easy, discreet handling – every day, in every hearing situation.



Prepared for every hearing situation.

Understanding your conversation partner.

Take full pleasure in your conversations – even in noisy environments such as a busy restaurant: The Sirion 2 **directional microphones** recognize speech and automatically switch to focus on your conversation partner in front of you while reducing the intensity of noise around you. This way, you only hear what you want to whether you are in a busy restaurant or at a family gathering.



Hearing speech clearly.

When hearing loss occurs, it can be difficult to hear high-pitched sounds such as "s" and "f", or children's voices. Sirion 2's **frequency compression** compresses and shifts these sounds to a lower range making them clearly audible for you again – so you don't miss one word of your grandchildren's stories.

Listen closely.

What can bring you and your loved ones closer together than a sweet secret or an "I love you," that is whispered into your ear? **Feedback cancellation** suppresses annoying whistling – so you can fully enjoy every tender moment.

Simple and smart handling.

With the touchControl App.



All Sirion 2 models are remotely controllable. The **touchControl App*** turns your smartphone into a discreet control center so you can change your hearing aid programs, volume, bass, and treble.

Easy to get and easy to use.

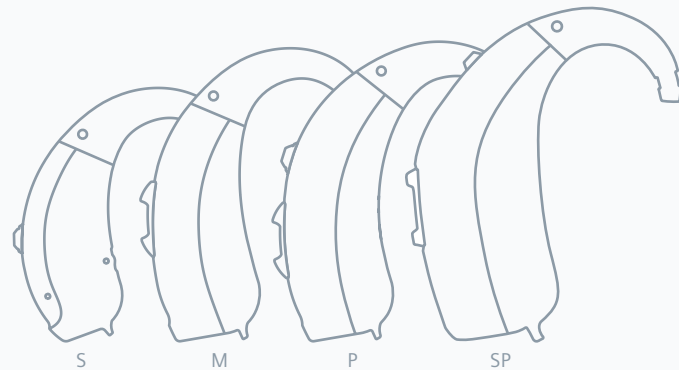
In just a few simple steps, you can download the **touchControl App** to your smartphone on the Apple App Store or Google Play Store. Then you can enjoy full control in the palm of your hand – all you need is your smartphone, no additional device is necessary.



touchControl App

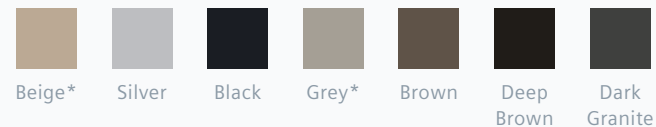


5 Actual size in cm



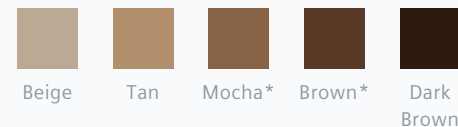
BTE colors for a natural look.

Sirion 2 BTE models match a variety of hair colors.



ITE colors for enhanced discretion.

Sirion 2 ITE models match a variety of skin colors.



*Available for all models.



* Compatible with Android and iOS. The app is free of charge.

Find out more about how to use your hearing aids and accessories with our helpful handling videos at www.best-sound-technology.com/handling

